

We cordially invite you to the "Anpacktage"!

GemSe Anpacktage April 2023

When: 12.04.2023-16.04.2023

**Where: GemSe, Wertschach/Dvorče 15 im Gailtal
Kärnten/Koroška**

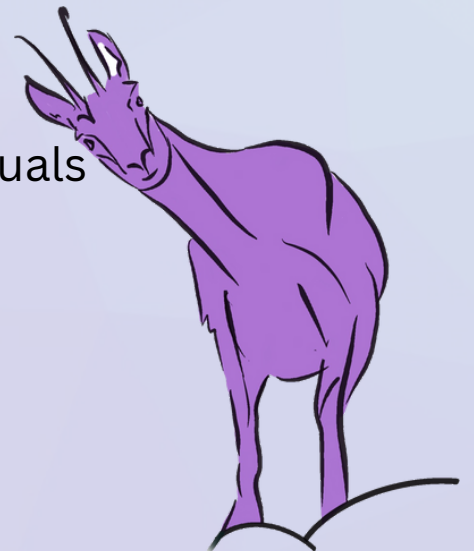
Who and what is the GemSe?

The GemSe is a community place designed by FLINTA+. The GemSe currently consists of more than 20 people, including four residents*.

The former country inn was bought collectively in December 2021 and we have been designing it together since then. Seminars, parties, meetings and construction sites have taken place. So far, a garden has been created, vacations have been spent there, and people have moved in.

The GemSe can be used by groups and individuals for seminars, meetings and recreation.

More info: <https://gemse.noblogs.org/>



Who is invited?

All women*lesbians*inter*nonbinary* trans*agender* persons and all persons who do not identify as cis-men are invited. Cis-men are persons who were classified as boys at birth and who identify as men.

What are Anpackage and why should you come?

The "Anpackage" are when FLINTA+ individuals come together to continue to build GemSe and have a good time together. We want to craft, fix, cook, and celebrate together.

The "Anpackage" are an opportunity to get to know this community place and to help shape it.

How do the "Anpackage" take place?

There will be a maximum of 30 of us at the Anpackage. We will probably paint walls and lay cables, clear out, build a foundation for the sauna, organize various rooms, make the rooms nicer and write operating instructions for the house.

You can pick and choose what you feel like doing. Some activities require some manual skills, others require structured thinking, and many require motivation and the desire to work together. But don't worry, you don't have to be a craftsperson or an interior designer to help out.

The GemSe is a place to try out new things and to learn with and from each other. You can also bring in your own ideas and implement them spontaneously on site.

Wednesday - Arrival day

Please arrive between 3-6 pm. The closest trains station is Nötsch, if you arrive by car there are parking lots on the premises. In the evening we will have dinner together, after that there will be a get together and a small tour through the house.

Thursday to Saturday - working days

Thursday to Saturday we will work together. It is a self-organized meeting, which means we will support the cooking crew and keep the place clean and cozy together. There will be plenums to create space for exchange and to discuss the individual construction sites and tasks.

We will organize the evenings according to our mood. Feel free to bring movies you like, a danceable playlist, games, topics you want to share. Depending on your own initiative, there may be small excursions, for example, swimming in the river Gail or hiking in the mountains surrounding the house.

Sunday - Departure

On Sunday there will be a final round of acknowledgement what we have accomplished together. We clean up together and have lunch before we leave again.

FYI: You can also arrive earlier and stay longer.

We have space! If you'd like to do that, please let us know.

We will send out a separate info about arrival and departure, where you can sign up.



Important things to know about our interaction with each other

We want to create a place where everyone feels comfortable. We want to pay attention to a solidary and critical interaction with each other.

Various people in the GemSe are currently working on making the space less discriminatory and barrier-free and to develop concepts on how to deal with cases of racism and discrimination. They will be the contact persons at the "Anpacktage", whom you can turn to. For the time being, we are guided by the principle of "the power of definition", which means that people who are affected by assault or discrimination determine whether a behavior is assaultive or discriminatory. They are also the ones who can decide how to deal with the situation. Otherwise, there will be a plan for dealing with discrimination in the group that can be referred to in consultation.

Physical barriers in the GemSe

The GemSe is not yet accessible for wheelchairs. The common area, kitchen and toilets are on the first floor, the bedrooms on the 1st and 2nd floor are accessible by stairs.

If you need more information please contact us.

Sleeping arrangements

The GemSe is a former country inn, therefore there are many rooms of different sizes: There is a single room, many dormitories for two and a group dormitory for 5 people. Most of the rooms are heated.

If it is important to you to sleep alone in a room or to share a room with a certain person or if you have other wishes concerning the sleeping situation, please let us know in your registration.

We will try to take this into consideration. We will contact you if we are unable to meet your wishes in order to discuss other options with you.

Food

There will hopefully be a fixed cooking crew. We will support them with chopping vegetables, making breakfast, washing up and keeping the kitchen clean.

All dishes will be vegan. If you have any food allergies or intolerances, please let us know in the registration form so that we can take them into account when planning the menu.

Arrival

We ask you to **arrive on 12.04. until 6pm.**

The departure is on 16.04. around noon.

By train: The nearest train station is Nötsch in Gailtal. From there there is a shuttle.

By car: Parking is available directly on the premises.

Costs

You don't have to pay anything for your participation. If you can and want to make a contribution on a voluntary basis, we would be happy about that.

If you need a travel support for your train ticket or if you can only come if we cover the travel costs completely, please let us know in your registration so that we have an overview of the costs.

Anpackage with children

You are welcome to come with children to the "Anpackage". There is plenty of room to play, run around and explore in the GemSe. Older children can also join in fixing up the place if they feel like it. We do not offer childcare. However, there are people in charge who will be happy to assist you with childcare and come up with a little program depending on the age of the children. Please indicate when registering whether you will be coming with your child(ren) to the "Anpackage".

Anpacktage with dogs

If you can't leave your dogs at home, but would like to come, please mention this in your registration and tell us a little bit about your dog. We will ask about allergies and discomfort with dogs and see what is possible.

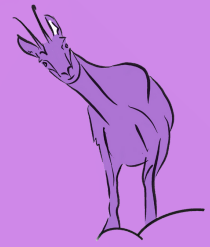
Language and translation

The plenary sessions will be held in German or English as needed. Maybe also bilingual or with whisper translation.

Covid-19

We ask everyone to get tested (antigen or even better PCR) shortly before arrival. If this is not possible for you, there will be antigen tests on site.

REGISTRATION



To sign up for the Anpacktage, please complete the following survey by **SUNDAY, March 12:**

German only :(

<https://freeonlinesurveys.com/s/aAlhuWnt/i/0>

IF YOU CAN'T REGISTER WITH THE FORM, **PLEASE SEND US AN EMAIL UNTIL SUNDAY, MARCH 12, TO gemse_gaital@riseup.net** WITH THE REFERENCE "REGISTRATION ANPACKTAGE APRIL 23" AND ANSWER THE QUESTIONS MARKED IN PURPLE.

1. **Have you been or are you affected by transphobia and/or homophobia?**
2. **Have you been or are you affected by racism, anti-Semitism and/or xenophobia?**
3. **Have you participated in previous "Anpacktage?"**

Brief explanation of why we are asking you these questions:

It is easier for privileged people to participate in events like this. We have decided to favor people who have been affected by discrimination. Therefore, we ask for a self-assessment regarding different experiences of discrimination. We are aware that these issues can be triggering for many people, so it is enough for us if you just answer "Yes" / "Yes, multiple times" / "No" to the questions. You don't have to go into detail - if you want to say something additional, you are of course welcome to do so.

Please answer these questions as well:

- **Are you bringing child(ren)?**

You are welcome to come to the "Anpacktage" with children. There is plenty of room to play, run around, and explore at the GemSe. Older children can also join in the crafts if they feel like it. We do not offer childcare. However, there are people in charge who will be happy to assist you with childcare and will come up with a little program depending on the age of the children. Please indicate when registering if you are coming with child(ren).

- **Are you bringing a dog / How do you feel about dogs?**

If you can't leave your dogs at home but would like to come, please indicate this in your registration and tell us a little about the dog. We will ask about allergies and discomfort with dogs and see what is possible.

If you are afraid of dogs or have dog allergies, please let us know.

- **Do you have food intolerances?**

We will cook vegan, but are happy to accommodate allergies or intolerances as much as possible.

- **Do you have specific requests regarding your sleeping situation, or would you like to share a room with a certain person?**

We cannot promise a single room as there are only a few but we will do our best to accommodate your needs.

- **Is it important for you to come together with one or more other specific people? (If yes, with whom?)**

**On March 15, we will inform everyone
about the allocation of places.**

We are looking forward to your registration!
If you have any questions please e-mail us!
gemse_gaital@riseup.net

Many greetings from the Anpacktage-Crew

